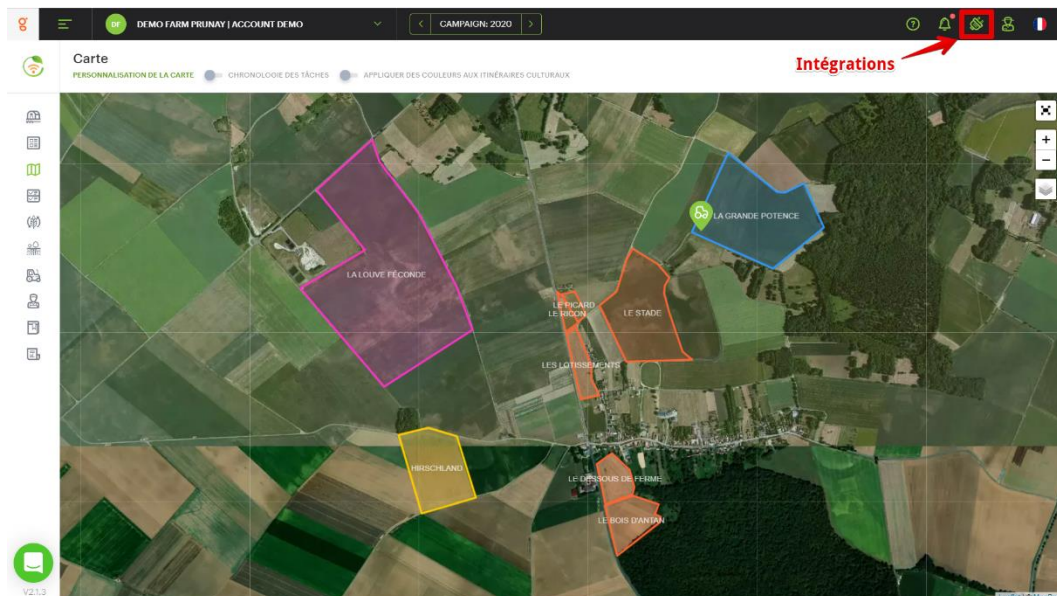
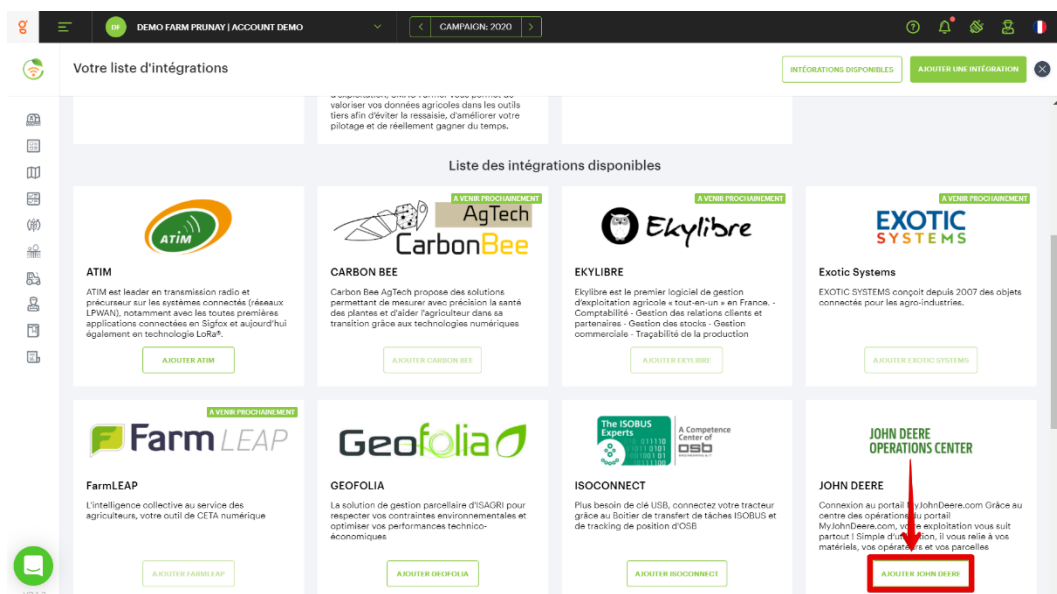


Activating the Operation Center MyJohnDeere connection on MyEasyFarm

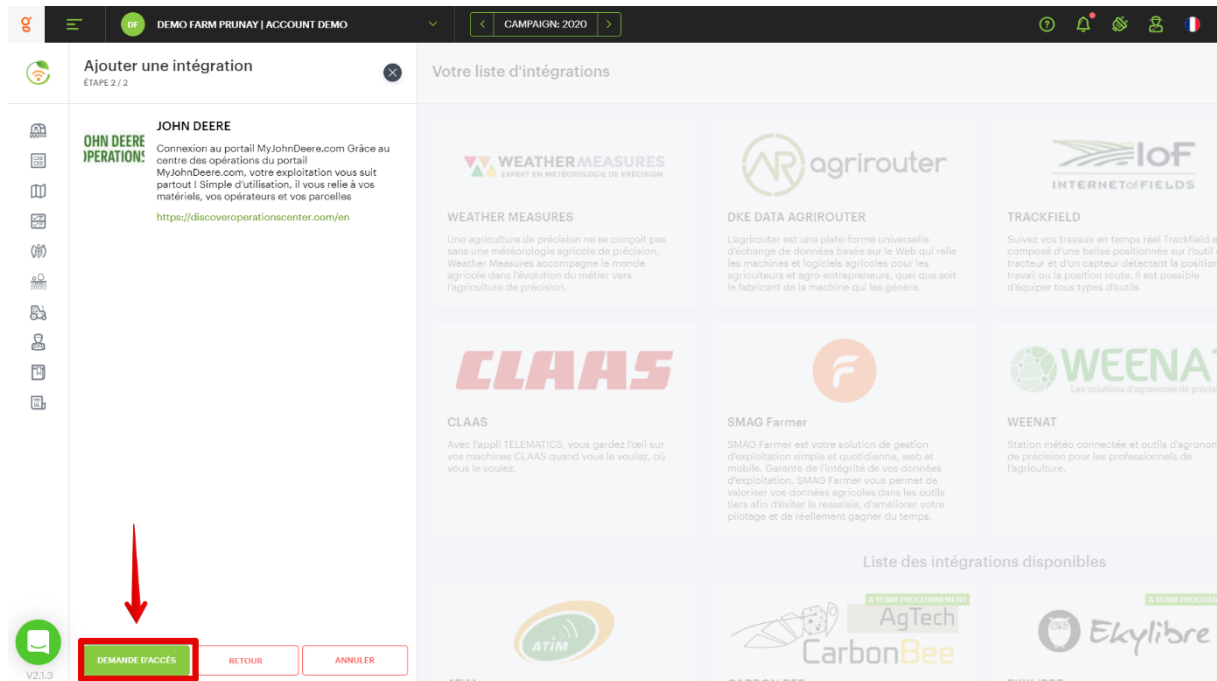
From the "Integrations" tab, access the MyEasyFarm MarketPlace which includes all possible connections.



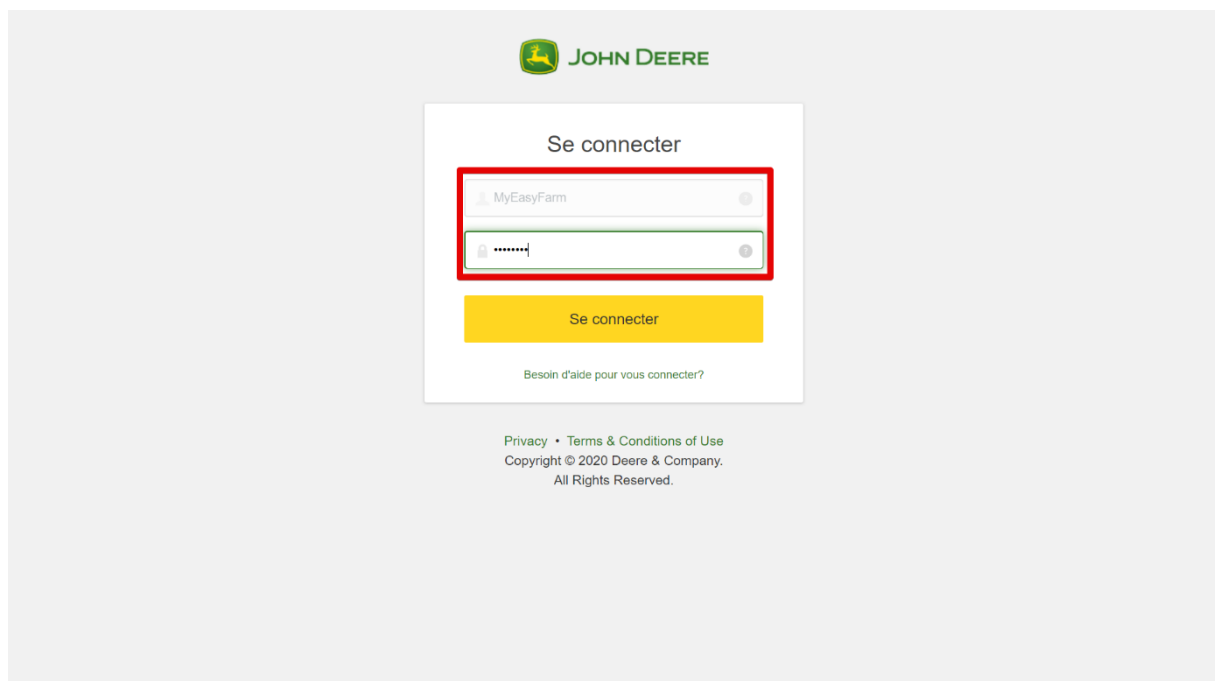
In the list of available integrations, find the John Deere Operation Center integration and click "Add JOHN DEERE".



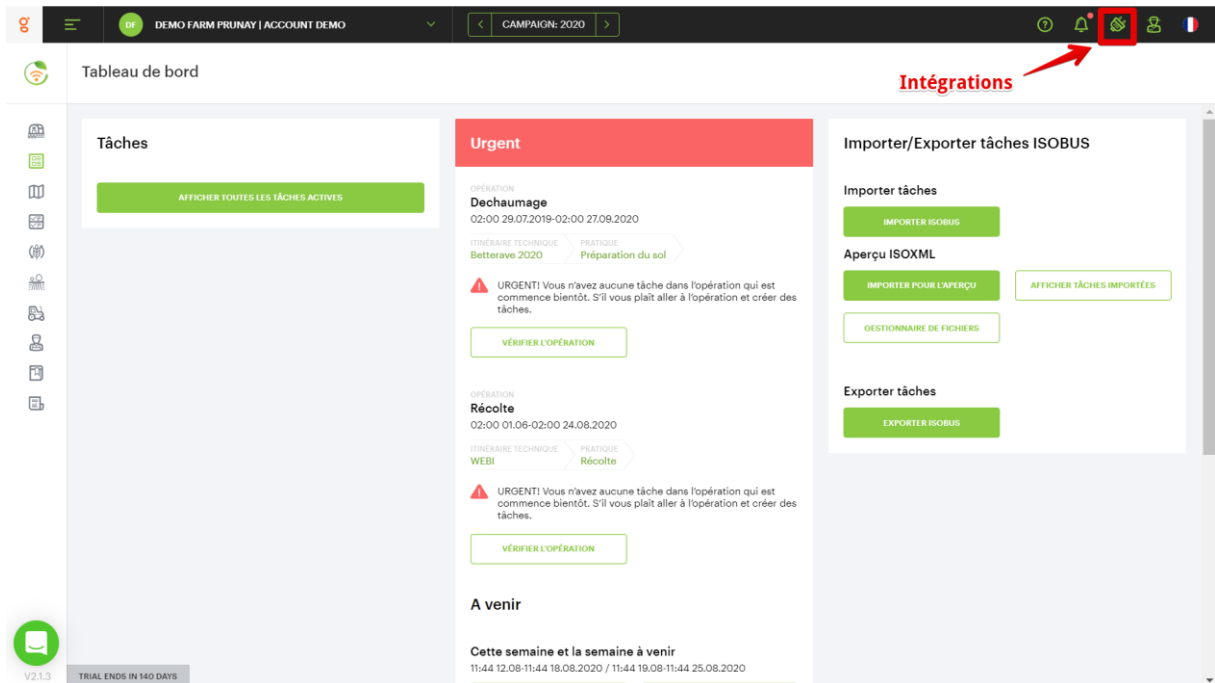
Once on the page you can request access by clicking on the "REQUEST ACCESS" button. This will take you back to your MyJohnDeere login page.



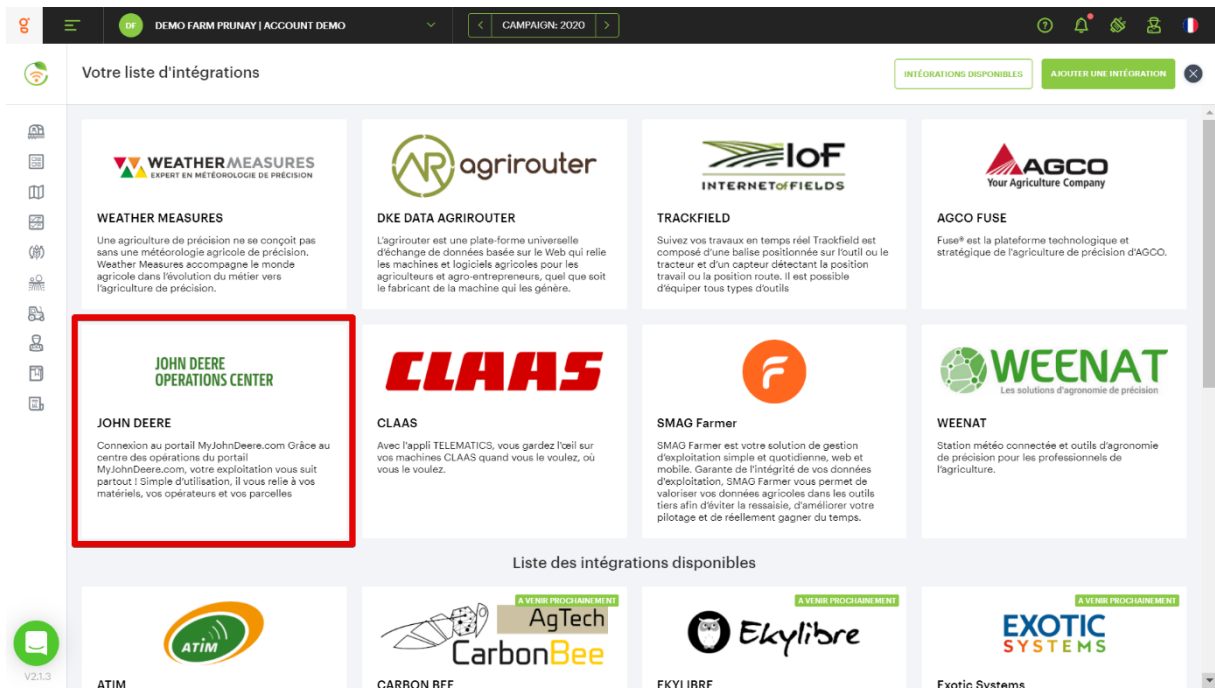
Once on the John Deere identification page, you can log in by entering your John Deere credentials.



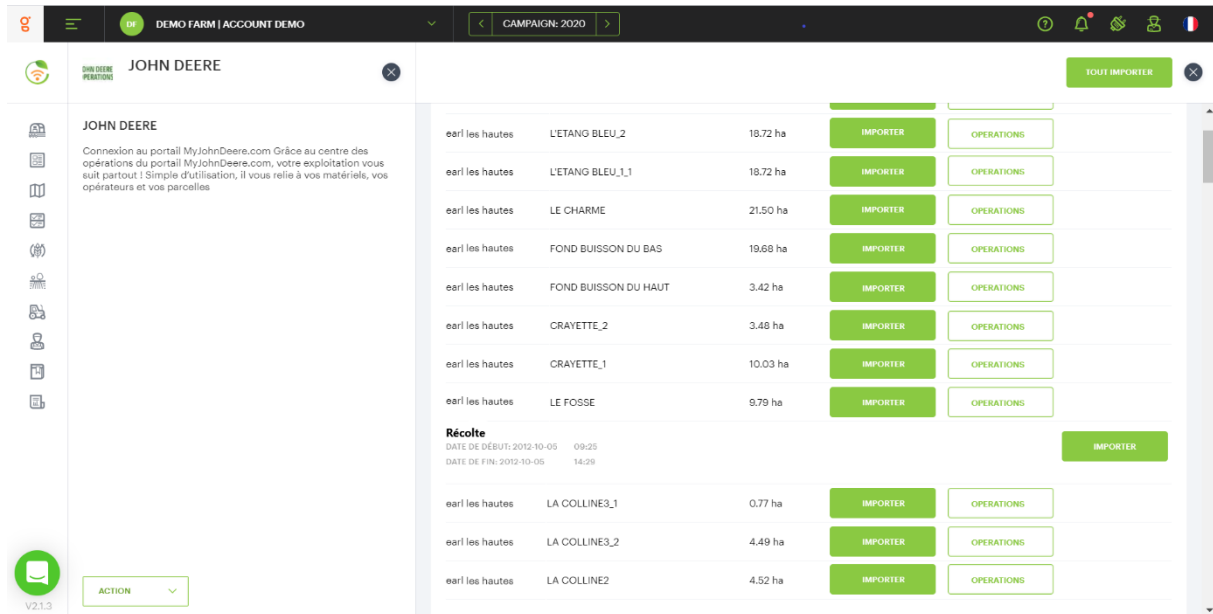
You have been referred to the MyEasyFarm dashboard? Don't panic! This means that the connection is properly established! You can retrieve your data by going to the MyEasyFarm integrations page.



Then by clicking on the JOHN DEERE integration.



The list that appears on your screen corresponds to the different plots you have on your MyJohnDeere account. By clicking on "Import" or "Operations" you will be able to import into MyEasyFarm the different operations and parcels registered on MyJohnDeere.



The screenshot shows the MyEasyFarm interface for a John Deere account. The main content area displays a list of plots with the following details:

Plot Name	Area (ha)	Import Button	Operations Button
earl les hautes L'ETANG BLEU_2	18.72	IMPORTER	OPERATIONS
earl les hautes L'ETANG BLEU_1,1	18.72	IMPORTER	OPERATIONS
earl les hautes LE CHARME	21.50	IMPORTER	OPERATIONS
earl les hautes FOND BUISSON DU BAS	19.68	IMPORTER	OPERATIONS
earl les hautes FOND BUISSON DU HAUT	3.42	IMPORTER	OPERATIONS
earl les hautes CRAYETTE_2	3.48	IMPORTER	OPERATIONS
earl les hautes CRAYETTE_1	10.03	IMPORTER	OPERATIONS
earl les hautes LE FOSSE	8.79	IMPORTER	OPERATIONS
Récolte			
DATE DE DÉBUT: 2012-10-05	09:25	IMPORTER	
DATE DE FIN: 2012-10-05	14:29		
earl les hautes LA COLLINE3,1	0.77	IMPORTER	OPERATIONS
earl les hautes LA COLLINE3,2	4.49	IMPORTER	OPERATIONS
earl les hautes LA COLLINE2	4.52	IMPORTER	OPERATIONS

It is also possible to export recommendation cards from MyEasyFarm to MyJohnDeere but we will see this in another tutorial.